

PRODUCT GENERAL VIEW

UV FLAME DETECTOR

The UV flame Detector detects fire by analyzing ultra violet radiation of material flaming. It's applicable to places where open fire, fire with intense flame radiation and fire without smoldering stage take place easily as well places where quick response to a fire is required. Used together with other detectors, It can sense fire in time to minimize the losses as much as possible.

KEY FEATURES

- Dual LED for 360 degree visibility
- 02 wire based model
- Easy installation and maintenance
- High sensitivity and wide directivity
- Sleek low-profile housing design
- Quick detection of flame from Distance
- SMD circuit board design-satisfactory quality and reliability guaranteed



MODEL NO. : QT FLM - 2L

TECHNICAL DATA

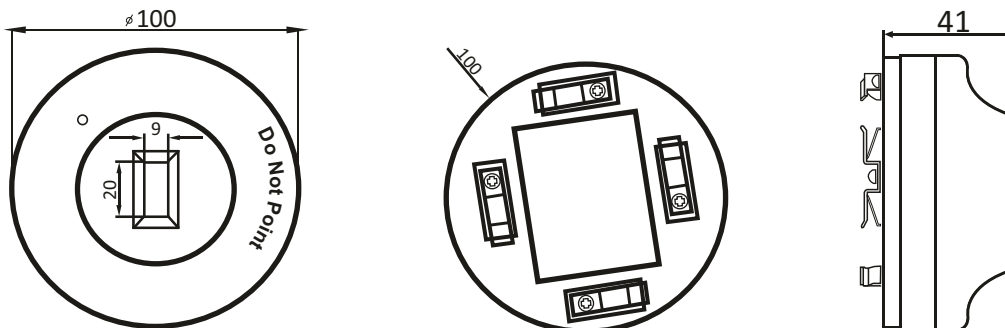
- Operating Voltage	12V to 30V DC
- Temperature	10°C to 50°C
- Humidity	10% to 93%
- Spectrum	180 to 290 nm
- Direction Angle	110 degree
- Sensitivity	Grade I, 25m
- Standby current	Less than 10mA
- Alarm current	Less than 30mA
- Weight	150g
- Construction	ABS Housing
- Dimension	D 130mm, H 45 mm

MECHANICAL SIGNIFICATIONS

- Height 53.5 mm With Base
- Diameter 103 mm Dia
- Weight 112 g With Base

STRUCTURE OF THE DETECTOR

Thread the cable through the conduit of back box and base ; fix the base on the back box. There are four terminals with numbers on the base. "1" and "3" to power supply, "1" is anode and "3" is cathode, "2" to next detector.

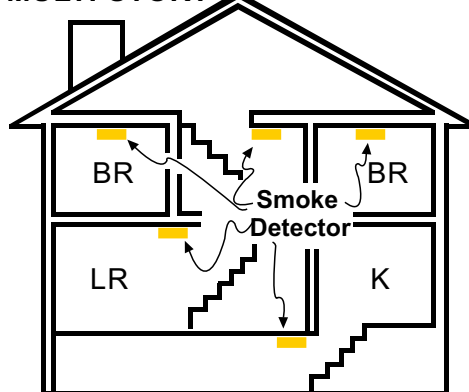


KEEP SMOKE DETECTORS OUT OF DEAD SPACES WHERE WALLS MEET THE CEILING

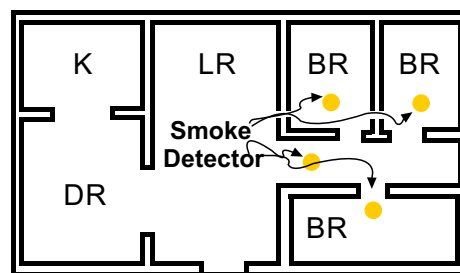
LED INFORMATION

PLACE ONE SMOKE DETECTOR ON EVERY FLOOR AND SLEEPING ROOM

MULTI-STORY



SINGLE LEVEL



NOTE:

- The Operation with a little heat is normal.
- Open the window & let the air flow rapidly.
- The product can be only detected the gas indicated in name plate.
- Please maintain it periodically according to the directions.
- Malfunctions happens, don't dismantle and maintenance the detector by yourself. Please contact our company or local office for maintenance.
- The Detector must be installed and connected correctly. It can't work if the power supply is missed.
- Don't install the product under high temperature (eg. close to oven) and in lampblack (eg. close to exhaust).