

PRODUCT GENERAL VIEW

STAND ALONE SMOKE DETECTOR

This product is a Stand Alone Smoke Detector which runs by detecting smoke particles. Adopted special structure design, and photoelectric signal processing technique, it has the functions of dustproof, mothproof, and anti-interference, the stability of the product is assured from the above. It performs well in detecting visible smoke caused by hidden or bright fire. It's suitable for detecting smoke in houses, stores, hotels, and warehouses, etc.



KEY FEATURES

- Slow Responsive Optical Smoke detector with inbuilt buzzer
- Tamper resist pins for batteries
- RED LED flashes once every 45s to indicate stand by status
- RED LED flashing and buzzer sounding for alarm indication
- Low battery warning
- Test button available

MODEL NO. : QT 880-SA

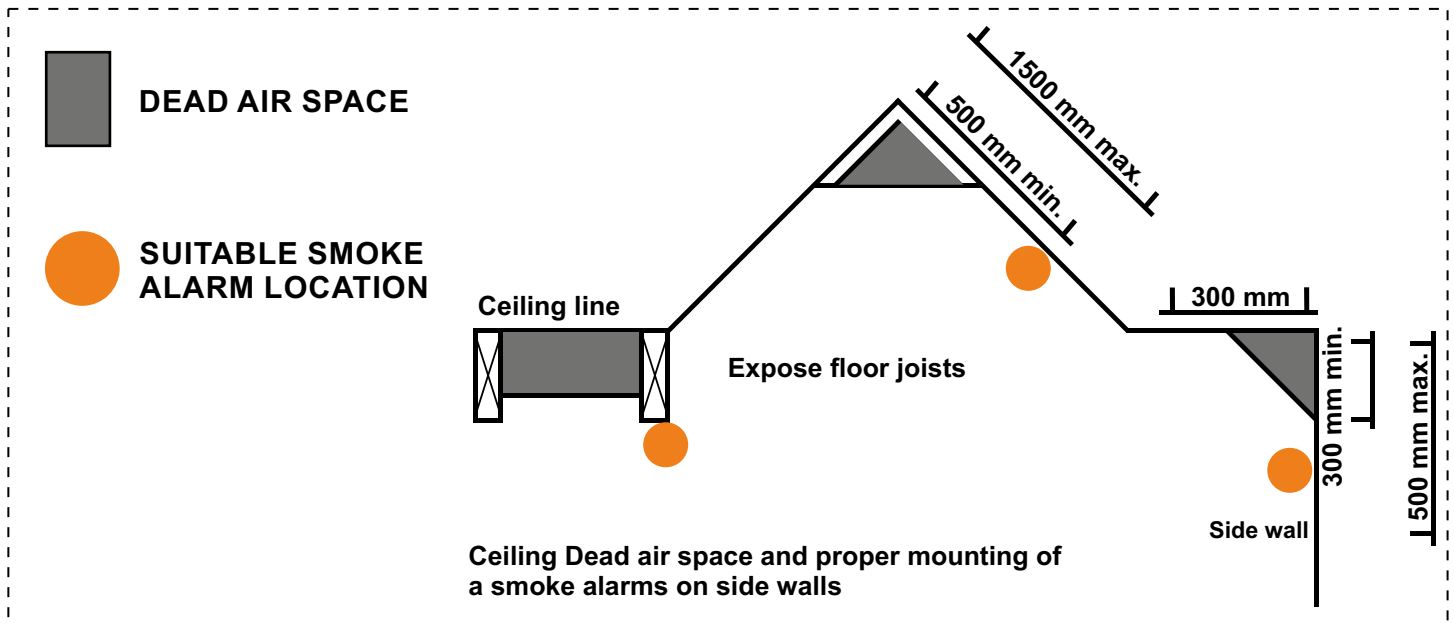
TECHNICAL DATA

- Operating Voltage	DC 9V (6F22 Alkaline Battery)
- Static Current	10 μ A
- Alarm Current	35mA
- Frequency	3-5 Seconds
- Smoke Sensitivity	1.3% / ft ~ 2.06% / ft obscuration
- Sound level	80 db / 3m
- Alarm output	Sound and Flash Alarm
- Weight	180g with base, battery and accessories
- Detecting area	80m ² at 6 -12 m installation height 60m ² at installation height <6m

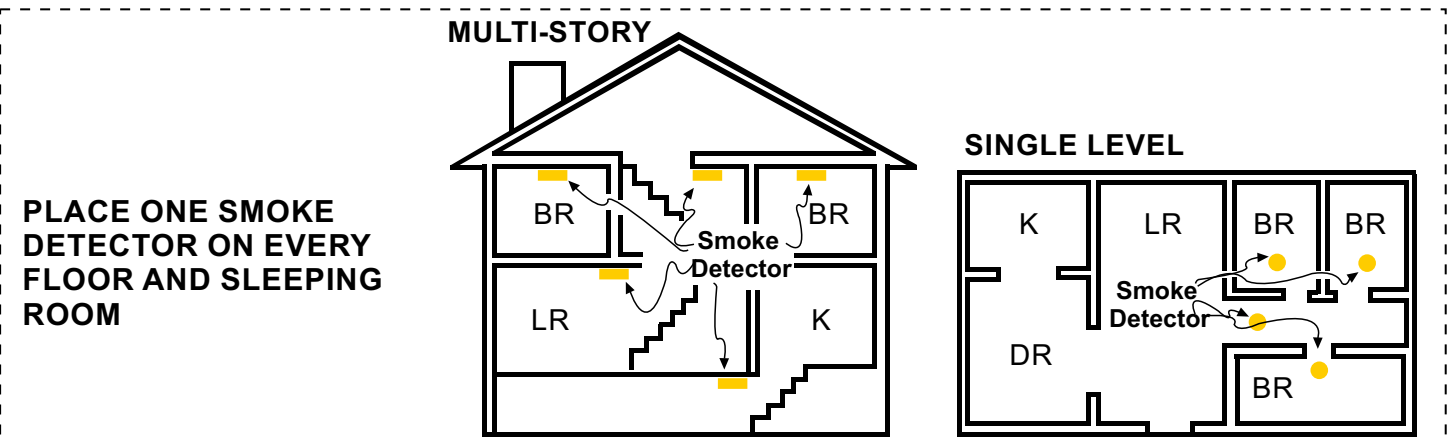
MECHANICAL SIGNIFICATIONS

- Detecting area 80m² at 6 - 12 m installation height
60m² at installation height <6m
- Weight 180 g With Base, Battery and Accessories

INSTALLATION DIAGRAM



LED INFORMATION



NOTE:

- The Operation with a little heat is normal.
- Open the window & let the air flow rapidly.
- The product can be only detected the gas indicated in name plate.
- Please maintain it periodically according to the directions.
- Malfunctions happens, don't dismantle and maintenance the detector by yourself. Please contact our company or local office for maintenance.
- The Detector must be installed and connected correctly. It can't work if the power supply is missed.
- Don't install the product under high temperature (eg. close to oven) and in lampblack (eg. close to exhaust).

