

PRODUCT GENERAL VIEW

STAND ALONE SMOKE DETECTOR

This product is a Stand Alone Smoke Detector which gives early warning of possible fires at a reasonable cost. Adopted special structure design, and the stability of the product is assured from the above. It performs well in detecting visible smoke caused by hidden or bright fire. It's suitable for detecting smoke in houses, stores, hotels, and warehouses, etc.



KEY FEATURES

- High Responsive optical smoke detector with inbuilt buzzer
- Tamper resist pins for batteries
- RED LED flashes once every 45 s to indicate stand by status
- Red LED flashing and buzzer sounding for alarm indication
- Low battery warning
- Test button available

MODEL NO. : QT 990-SA

TECHNICAL DATA

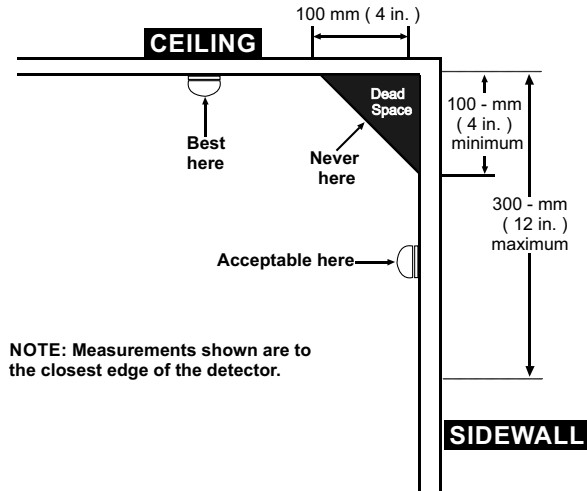
| | |
|---------------------|--|
| - Operating Voltage | DC 9V (6F22 Alkaline Battery) |
| - Static Current | 10 μ A |
| - Alarm Current | 35mA |
| - Frequency | 3-5 Seconds |
| - Smoke Sensitivity | 1.3% / ft ~ 2.06% / ft obscuration |
| - Sound level | 80 db / 3m |
| - Alarm output | Sound and Flash Alarm |
| - Weight | 190g with base, battery and accessories |
| - Detecting area | 80m ² at 6 -12 m installation height 60m ² at installation height <6m |

MECHANICAL SIGNIFICATIONS

- Height 46 mm With Base
- Diameter 100 mm Dia
- Weight 150 g With Base, Battery and Accessories

INSTALLATION DIAGRAM

Smoke Detectors should be mounted on the ceiling at least 4 inches from a wall or on a wall with the top of the alarm not less than 4 inches, or more than 12 inches, below the ceiling.

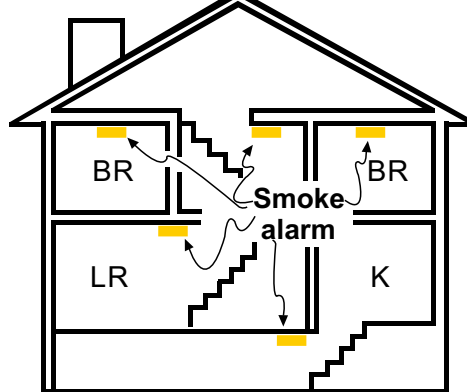


KEEP SMOKE DETECTORS OUT OF DEAD SPACES WHERE WALLS MEET THE CEILING

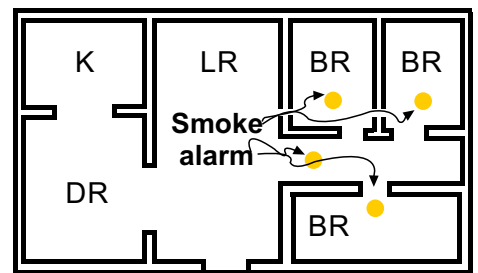
LED INFORMATION

PLACE ONE SMOKE ALARM ON EVERY FLOOR AND SLEEPING ROOM

MULTI-STORY



SINGLE LEVEL



NOTE:

- The Operation with a little heat is normal.
- Open the window & let the air flow rapidly.
- The product can be only detected the gas indicated in name plate.
- Please maintain it periodically according to the directions.
- Malfunctions happens, don't dismantle and maintenance the detector by yourself. Please contact our company or local office for maintenance.
- The Detector must be installed and connected correctly. It can't work if the power supply is missed.
- Don't install the product under high temperature (eg. close to oven) and in lampblack (eg. close to exhaust).

