

## KEY FEATURES

- 16 x 2 line DOT matrix LCD
- Accept 20 telephone nos. and 03 messages
- 20 sec. duration time of each message
- Operates on both DOT and EPABX
- Recorded voice message recall facility
- Programmable repeat message option (01 - 03 times)

## TECHNICAL DATA

- Operating Voltage 12V DC / 24V DC (As per specification)
- Operating Temperature 0° C to 50° C
- Operating Humidity 95% (non-condensing)
- Weight 450g with Antina
- Construction ABS Housing
- Dimension L 157mm \* D 50mm \* W 200mm

## EMERGENCY AUTO DIALER



**NOTE: GSM based auto dialer is also available. (Model No. QT SD5500)**

**MODEL NO. : QT SD4000**

## INDUSTRIAL SIRENS



**Model No. QT ISMB-1000**

### TECHNICAL DATA :-

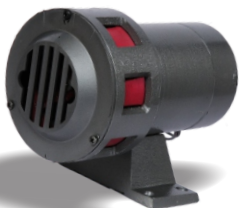
- Product Metal Body Siren
- Current 3Amp
- Power I/P 24V DC
- Sound O/P 132 db
- Size 130 x 155
- Built in MS Housing



**Model No. QT PB-1000**

### TECHNICAL DATA :-

- Product Electronic Siren
- Current 1Amp
- Power I/P 12V / 24V DC
- Sound O/P 124 db
- Size 155 x 135
- Built in ABS Housing



**Model No. QT ISMB-2200**

### TECHNICAL DATA :-

- Product Industrial Siren
- Current 5Amp
- Power I/P 220V AC
- Sound Range 1/2 KM
- Size 130 x 155
- Built in MS Housing



**Model No. QT PSPB-2000**

### TECHNICAL DATA :-

- Product Piezo Siren
- Current 100mA
- Power I/P 12/24V DC
- Sound Range 110 dB
- Size 60 x 60 x 70
- Built in ABS Housing